

# User's Manual

V8.60



<http://www.HDDGuarder.com>

## Disclaimer

We have done our best to ensure that the material in this manual is both accurate and useful; however, please be aware that errors may exist, and it does not make any guarantee concerning the accuracy of information found here or in the use to which it may be put.

Before you install HDD Guarder, please backup all your important files and ensure that it is stored separately.

# CONTENTS

CHAPTER 1 INTRODUCTION .....	4
1-1 Function .....	4
1-2 Features.....	4
CHAPTER 2 INSTALLATION .....	6
2-1 System requirements .....	6
2-2 Before installation .....	6
2-3 Start installation.....	6
2-3-1 Installation of driver for Windows 2000/NT/XP (software installation).....	6
2-3-2 Installation of Guarder card (hardware installation).....	9
2-4 Express test .....	11
CHAPTER 3 BASIC OPERATION GUIDE .....	12
3-1 Definition of terms .....	12
3-2 Operation Guide.....	12
3-2-1 Hotkeys Menu.....	12
3-2-2 Set Protected Partition Menu .....	18
3-2-3 Set Parameters Menu .....	18
3-2-4 Protect CMOS .....	20
3-2-5 How to modify the password .....	20
3-2-6 How to uninstall Guarder .....	21
3-3 Unique Serial Number and Serial-Number Password .....	21
3-4 How to set Multi-Boot.....	22
3-4-1 Setting Multi-Bootable-Partition Booting by BootMagic .....	22
3-4-2 Setting Multi-OS Booting by System Commander .....	22
3-4-3 How to Skip Possible Virus Warning.....	22
CHAPTER 4 TROUBLESHOOTING .....	24
I forgot the password.....	错误！未定义书签。
As if no Guarder card is plugged in .....	错误！未定义书签。
Displaying blue screen and Windows breaks down .....	错误！未定义书签。

# Chapter 1 Introduction

## 1-1 Function

- 2 An express installation can be performed by pressing the <Enter> key 3 times, it cost you only five seconds.
- 2 Once hard disk data is destroyed by any mistake, virus and/or hacker, only press <9> key one time to recover it in half a second.
- 2 Support IDE and SCSI hard disk controller.
- 2 Support PIO, DMA33, DMA66, Ultra DMA66, ATA-100 , Ultra ATA-100 IDE and SATA interface.
- 2 Support FAT16/16E, FAT32/32E, NTFS/HPFS partitions and file systems.
- 2 Support 256GB hard disk.
- 2 Guarder whole hard disk or selected partitions.
- 2 Support multi-OS booting by System Commander and multi-bootable-partition booting by BootMagic.
- 2 Support not only DOS, Windows 3x/95/98/ME, but also Windows NT/2000/XP/2003 server better.
- 2 Guard CMOS intelligently.

## 1-2 Features

- 2 When first set up, saved, or recovered, Guarder uses only 5KB of hard disk; when running , it uses 1.33MB of hard disk at most.
- 2 Dynamic Virtual Hard Disk Drive (DVHDD) is one created and managed by Guarder in guarded partitions for new data saving. Theoretically Guarder supports a DVHDD of 1207GB, practically it supports a 12GB one, so it better supports Windows NT/2000/XP/2003 server and ensures that the Defrag routine can run and large data can be saved when any partition is guarded.
- 2 The magic Save function is best suitable for such application environment about government, business, institute, home, finance, securities, accounting and the military. When any partition is guarded, all

writing on it will be recorded as new data. Once we use recovery or uninstallation function, all new data will be cleaned. Guarder provides Save function to write data onto hard disk.

- 2 Anti-Evil-Attack function is best suitable for cyber cafe and the computer labs of schools and colleges. When the attacker deletes all installation information on the guarded partitions, and reboots the computer, Guarder will enter a Security Check routine. OS can only be booted when the manager inputted the correct serial-number password.

## Chapter 2 Installation

### 2-1 System requirements

CPU: 386 or above  
Memory: 8M or more  
Hard-disk: IDE, EIDE and SCSI

### 2-2 Before installation

- 2 Make sure that your computer meets the above-mentioned system requirements.
- 2 If a similar product has been installed, remove it and its drivers.
- 2 Scan and clean viruses with anti-virus software.
- 2 Make sure there is no static electricity.

### 2-3 Start installation

There are two steps of installation (hardware installation and software installation) separately for HDDGuarder.

#### 2-3-1 Installation of driver for Windows 2000/NT/XP/2003

(software installation)

- 2 Boot the computer with Windows<sup>®</sup> 2000/NT/XP/2003.
- 2 Run Install.exe in the driver disk or CD supplied with the product or download from <http://www.hddguarder.com/new/Download.asp>.

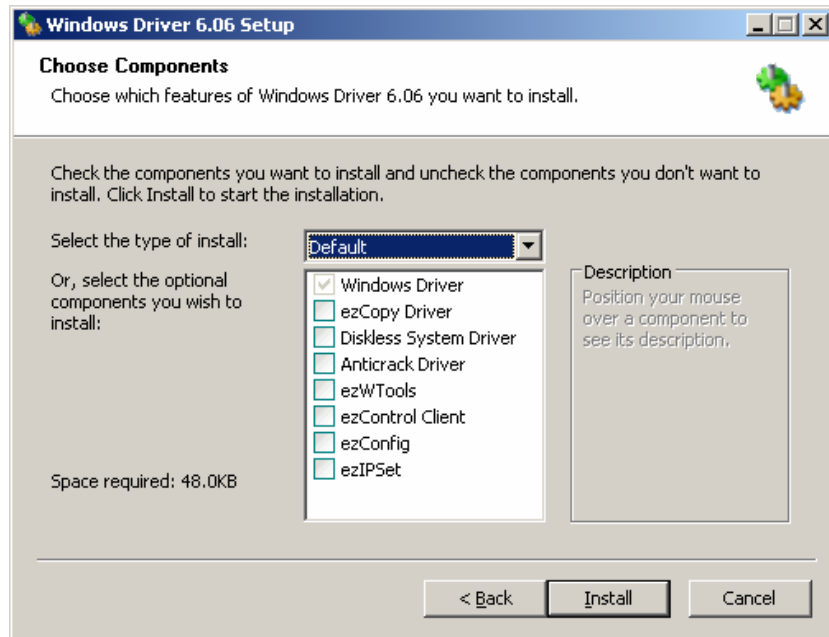
**Then the following Menu will appear:**



Press Next button, the following Menu will appear:



Press <I Agree> button, the following menu will appear:



You could choose Difference Type of install, there are Default, Office and Home; Cyber café and School; Diskless System; ezCopy Source PC and Ghost Source PC and Custom installation style etc. Also you could pick up the item you need from the option menu, in the left side, there are Description for each item, you could choose the required item according to your condition.

After your finish the above option, press <Install> button, the following menu will be appear:



2 Press Finish Button to Reboot your computer to complete the installation of Driver.

## 2-3-2 Installation of Guarder card

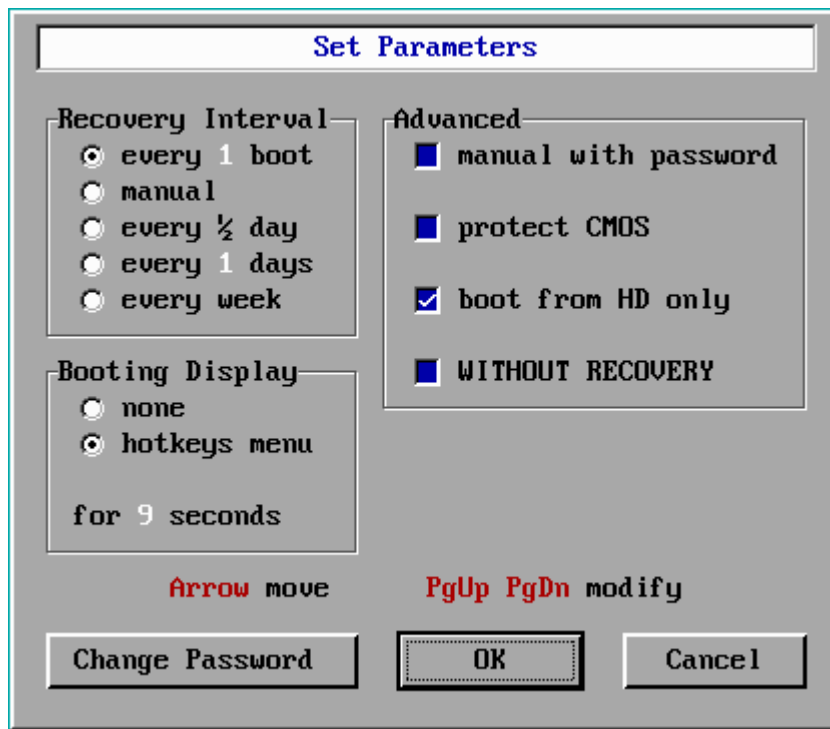
(hardware installation)

- 2 Make your computer turn off.
- 2 Insert the card into one of empty PCI slots on the motherboard of the computer.
- 2 Turn on your computer.
- 2 Check the setting of CMOS to make sure the parameters of hard disk are correct:
  - Ø If there is Boot From LAN First or similar item, enable it.
  - Ø Disable the Virus Warning item in CMOS setting.
  - Ø If there is a Hard Disk Recovery program in CMOS, disable it.
- 2 Reboot your computer, the following screen (Installation menu) will appear:



(Installation Menu)

- 2 Press <Enter> key three times, express installation will be finished with default parameters setting.
- 2 Press **Install**, the following screen (Set Parameters Menu) will appear:

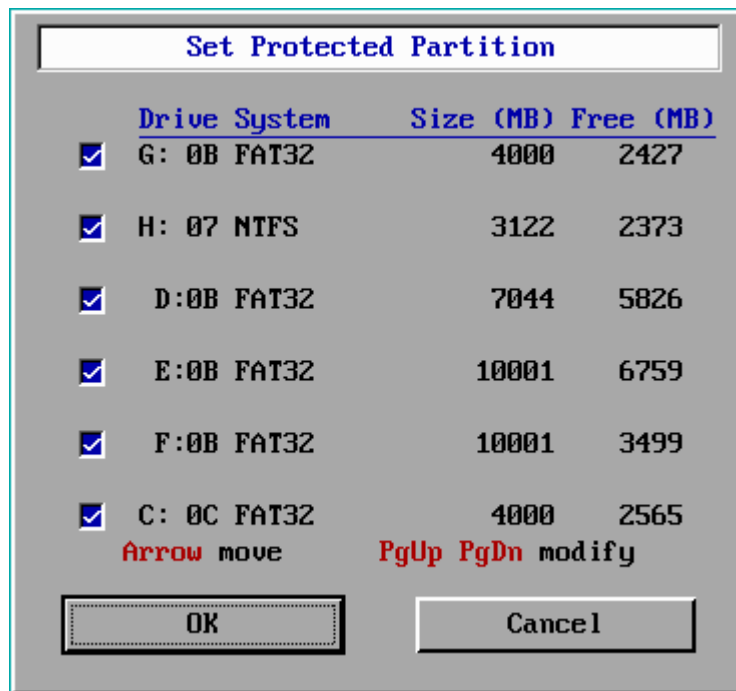


(Set Parameters Menu)

- 2 Press <Tab> key to move.
- 2 Press <Space Bar> or <PgUp> <PgDn> to modify the setting.
- 2 Press OK to save the setting and press Cancel to give up the change of setting.

*Noted:* Without recovery : if you choose it, in Hotkey menu will appear this option, the detail function kindly refer to 3-2-1 Hotkey menu.

- 2 After pressing OK, the following screen will appear (Set Protected Partition Menu):



(Set Protected Partition Menu)

- 2 Press <Arrow> key to move.
- 2 Press <PgUp> or <PgDn> or Space key to modify the setting.
- 2 Press OK to save the setting and press Cancel to give up the change of setting.
- 2 After pressing OK, The computer will reboot automatically. Now, you have finished the installation of the HddGuarder.

## 2-4 Express test

- 2 Create a folder at the root of drive C, and create another at Windows desktop.
- 2 Reboot your computer, if the folders disappear, it means that the Guarder functions well and has automatically finished recovery.

## Chapter 3 Basic Operation Guide

### 3-1 Definition of terms

- n Protected Mode: General operators such as students are recommended to use this mode. All useful data, files or programs are set to be protected and will be protected under this mode. All modification of the protected data will be recovered after Restore Data operation is executed.
- n Supervisor Mode: The data on hard disk is not protected under this mode, the operator can really install, uninstall, upgrade, etc. even if the drive is set to be protected.
- n Save Data: If useful data are created under protected mode and need to be saved, you can perform this operation to update the changes you made during last session.
- n Recover Data: No matter how do you set the parameter, you could recover data by press this hotkey <9> key.
- n Manual with password: If you select this item, you have to input password after press <9> key, otherwise, you don't need password to recover data.

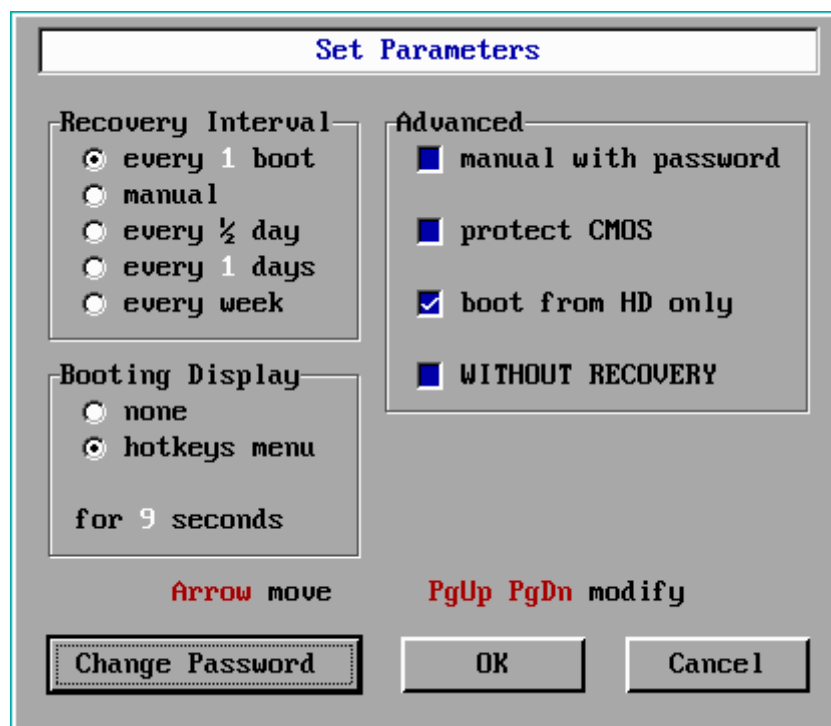
### 3-2 Operation Guide

#### 3-2-1 Hotkeys Menu

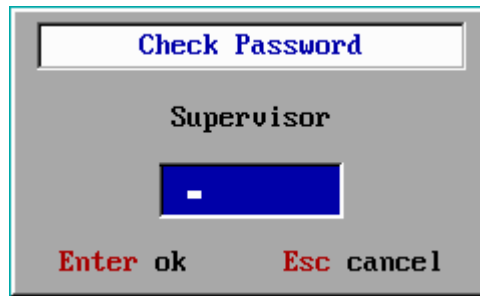
When booting your computer with HDD Guarder installed completely, the following screen (Hotkeys Menu) will appear:



If you choose Boot without recovery in set parameter menu, the following screen will appear:



- 2 Pressing any key could stop the time counting.
- 2 Press <Enter> key, you will enter protected mode, in this mode, all changes in the protected partitions will be protected.
- 2 Press <Esc> key, the following screen will appear:



After inputting the correct password, press <Enter> key, the following screen will appear:



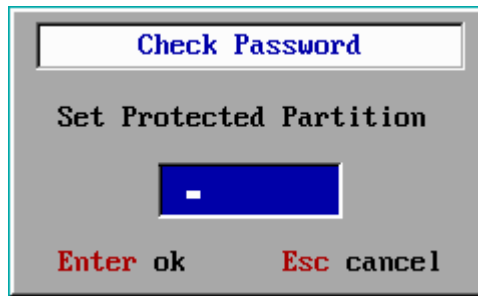
Press **Yes**, you will enter Operating System.

- 2 Press **Ctrl-Enter**, you will enter into Keep Mode, it will not check the recovery interval, Even if the recovery interval is 'Every 1 boot', 'Keep Mode' will keep data in the status of last shutdown or power-off

**Notice:** If user press Ctrl-Enter to use Boot without recovery, then all changed data will be temporary saved in HDD, If you want to enter into supervisor in next reboot, kindly noted all changed data will be recovered.

- 2 Press <5> key to enter Set Protected Partition Menu, in which you could set protection or not for each drive.

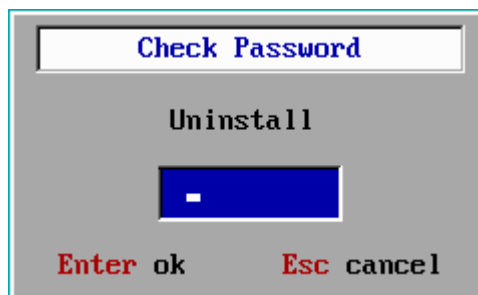
After pressing <5> key, the following screen will appear:



After inputting the correct password, press <Enter> key to enter Set Protected Partition menu.

- 2 Press <O> key to uninstall Guarder.

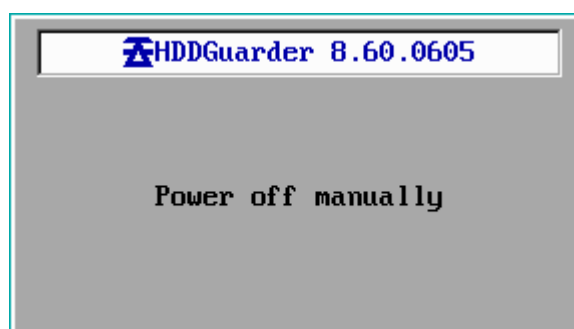
After pressing <O> key, the following screen will appear:



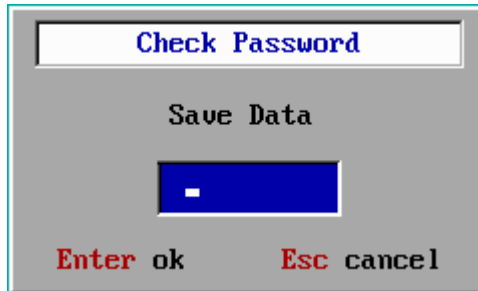
After inputting the correct password, press <Enter> key, the following screen will appear:



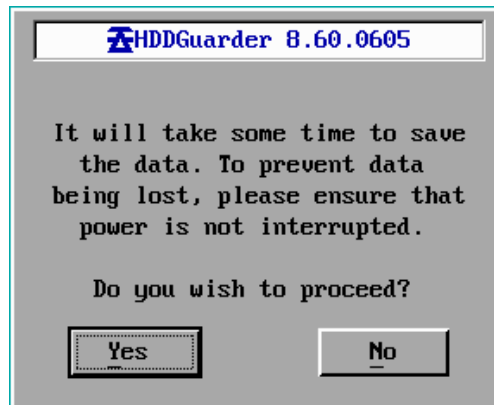
If you click Yes, the Guarder will automatically delete all the installation information, then the following screen appears:



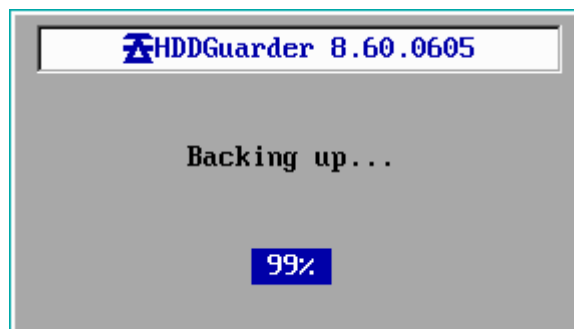
- 2 Press <6> key to save the changes you made after last saving.  
After pressing <6> key, the following screen will appear:



After inputting the correct password, press <Enter> key, the following screen will appear:



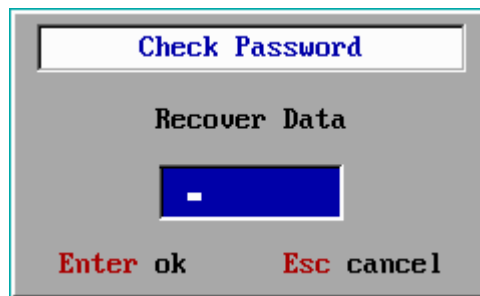
Press **Yes**, the following screen will appear:



then the computer will automatically reboot.

- 2 Press <9> key to recover the changes.

After pressing <9> key, the following screen will appear:



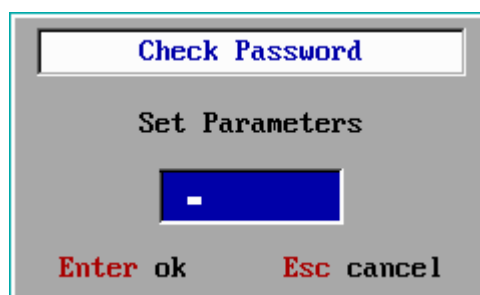
After inputting the correct password, press <Enter> key, the following screen will appear:



After pressing **Yes**, you will enter into Operating System with all changed data will be recovered..

- 2 Press <8> key to enter Set Parameters menu, in which you could set the parameters of HDD Guarder.

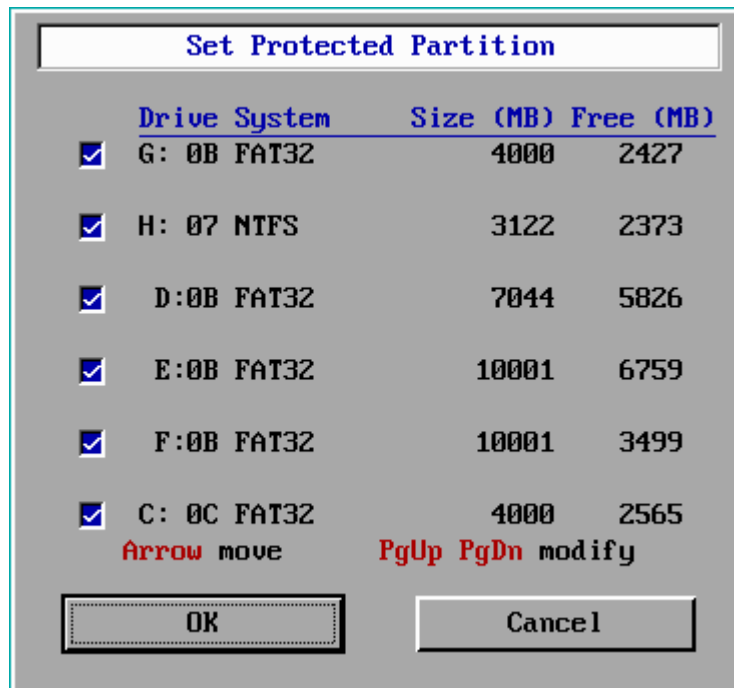
After pressing <8> key, the following screen will appear:



After inputting the correct password, press <Enter> key to enter Set Parameter menu.

### 3-2-2 Set Protected Partition Menu

Press <5> key in Hotkeys Menu, after inputting the correct password, the following screen will appear:



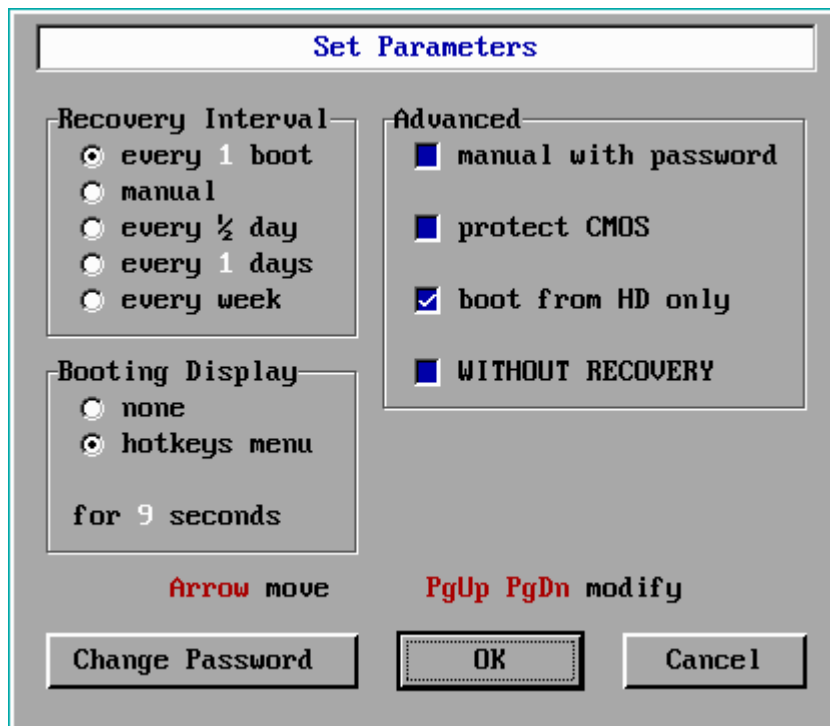
the default setting is protected all drives.

Press <Tab> to move and press <Space Bar> to mark or not mark V for every drive.

If there is mark of V, this drive will be protected, otherwise will not be protected.

### 3-2-3 Set Parameters Menu

Press <8> key in Hotkeys Menu, the following screen will appear:

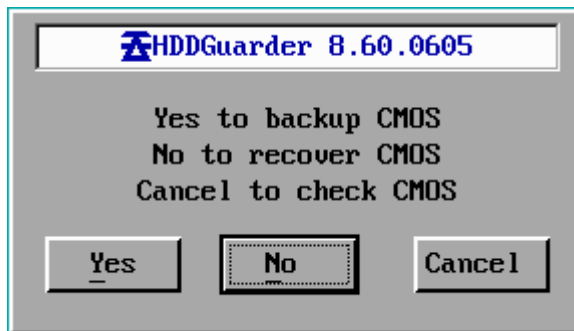


- 2 The default settings are as the above settings.
- 2 You could set the recover interval from every 1-99 boot, or every 1/2 day, or every 1-99 days, or every week, or manual recover.
- 2 If you mark **V** in the item of manual with password, that means you have to input password when you press <9> key to recover data; otherwise, you do not need.
- 2 If you mark **V** in the item of protect CMOS, that means the setting of CMOS is protected.
- 2 If you mark **V** in the item of protect BIOS, the BIOS will be protected, otherwise, not be protected.
- 2 If you mark **V** in the item of boot from HD only, that means the computer has to boot from hard disk, otherwise not.
- 2 If you choose Booting Display as none, that means when the computer booting, there will be no any screen about HDD Guarder and the computer will enter directly operating system. While you could get the Hotkeys Menu by pressing <8> key when booting your computer.
- 2 If you choose Booting Display as hotkeys, the Hotkeys menu will appear when booting your computer.
- 2 The displaying time could be modified from 15 seconds to 1 second, the default time is 9 seconds.

- 2 You could press <Tab> to move from one item to another, press <Space Bar> or <PgUp>/<PgDn> to modify the setting.

### 3-2-4 Protect CMOS

If you choose protect CMOS in Set Parameters menu, and if there are any changes for the setting of CMOS, the following screen will appear:



- 2 Press **Yes**, the changes of CMOS will be saved.
- 2 Press **No**, the changes of CMOS will be recovered.
- 2 Press **Cancel**, the computer will reboot three times, you could make any change for CMOS during the three reboots, and all changes will be saved permanently.

### 3-2-5 How to modify the password

The default password is **function**, all letters are in smaller case.

Press **Change Password** in the Set Parameters menu, the following screen will appear:



After inputting the new password, press <Enter> key, the following screen will appear:



Input the new password again, then press <Enter> key, the following screen will appear:



Press **OK**, the password is modified now.

If the two passwords you enter are not consistent, or you pressed key **Esc**, the following screen will appear to indicate that the password is not changed.



### 3-2-6 How to uninstall Guarder

Press <O> key in Hotkeys Menu, please refer to 3-2-1.

### 3-3 Unique Serial Number and Serial-Number Password

If you press key **F1** when entering the password, Guarder will display its serial number.

20040214.8899AABB.CCDDEEFF

- 2 20040214 is the manufacture date of your HDD Guarder card.
- 2 8899AABB.CCDDEEFF is the serial number. It is unique.

By the serial number, you can get the serial number password. The serial number password is an all-purpose password corresponding with your unique serial number, it is used in case you forgot the password, or Guarder carries security check to prevent evil-attack, and it can be only got from the distributors.

## 3-4 How to set Multi-Boot

### 3-4-1 Setting Multi-Bootable-Partition Booting by BootMagic

BootMagic is a software packed with PQmagic. It is specially used in installing Multi Bootable Partitions.

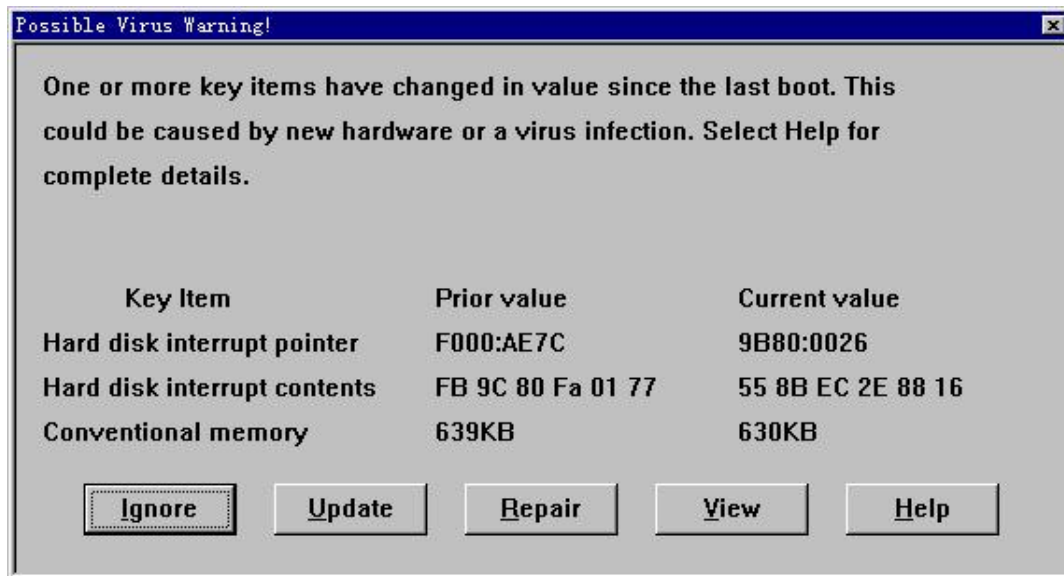
Please set HD partitions in PQmagic first, and then install BootMagic, OS, applications and the Guarder in this order.

### 3-4-2 Setting Multi-OS Booting by System Commander

At the first, install OS and applications. At the second, install System Commander. At last, install Guarder.

### 3-4-3 How to Skip Possible Virus Warning

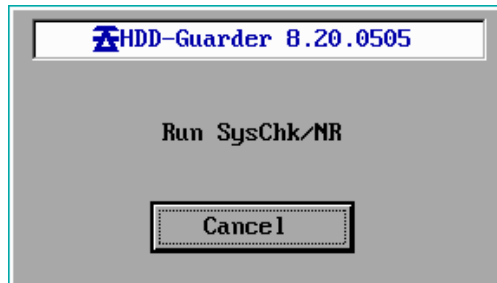
At the first time System Commander starts after Guarder installation, the Possible Virus Warning window will appear as follows.




Press <U> key to update. Reboot the computer and save hard disk data, and then as long as you do not uninstall the Guarder, this window will not appear whenever you recover hard disk data.

## Chapter 4 Troubleshooting

### Show SysChk/NR

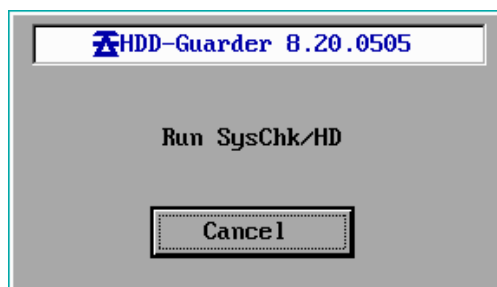



- 1、 Press  ,Enter into Windows, then install the latest version of driver, Now it is V606. Finally reboot PC.
- 2、 If the screen still appears, Kindly contact with your supplier.

### Noted

If there are this screen appear, it means the card is compatible with your PC.

### Show SysChk/HD



- 1、 Check if there are USB inserted in your PC; if yes, Kindly power off , plug out USB key then reboot.
- 2、 If there are no USB device on your PC, kindly check by pressing  , then you could enter into Windows, because if the Hard disk was not made partition and formatted, it could not be installed recovery card.

- 3、 If your hard disk had been made partition and formatted, also install Operation System well, Kindly power off, plug out the card, then do as follows:



The following operations need professional computer knowledge, it is better to be done or assisted by career man, Normal users DO NOT make the following by yourself.

- ( 1 ) Backup all the important data into other PC or USB key.  
Download SysClr.exe from <http://www.hddguarder.com/newhdd/Download.asp>
  - ( 2 ) Boot into Pure DOS, Windows98 DOS.
  - ( 3 ) Run SysClr ALL.
  - ( 4 ) Rebooting, reset CMOS option: HDD Detection as AUTO, then enter into Pure DOS.
  - ( 5 ) Make partitions with FDISK. Kindly noted that: Do not make partitions with any other software.
  - ( 6 ) Rebooting, install Operation system, such as Windows 2000/XP/2003.
  - ( 7 ) Power off. Insert Hddguarder card into Slot, power on again.
- 4、 If there are still the screen appears, kindly contact with your supplier.

## Why you should remake the partition?

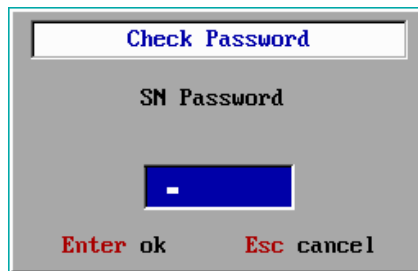
The Hard disk parameter are saved in three positions:

1 : Integrate circuit

Inside HDD. CMOS and HDD partition Table. If the tree sets parameters are difference, the Hddguarder card will not work and bring the error message screen with blue screen or system hung, sometime make system crash. So MUST operate according the above ( 3 ) ( 4 ) ( 5 ) .

Till November 2006, There are only Hddguarder make the consistent test for the tree sets of parameters located in three positions.

## Ask to input SN password

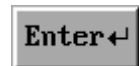


First Solution,

Input the default password function, then press



Second Solution, This card should be installed in some other PC while plug out without uninstall, you could input the admin password set in the installed PC. then press



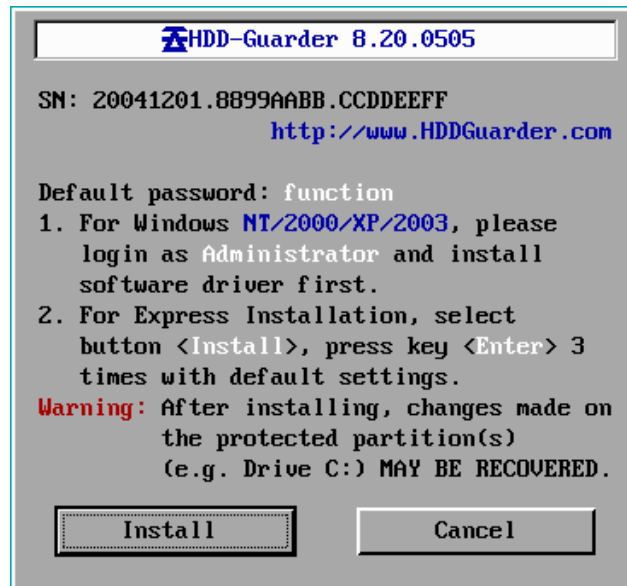
Third Solution, Power off, plug out the card, find out an other PC which is with difference Motherboard, then insert the card into its slot, power on, there are the above screen appears, repeat the First and second Method.

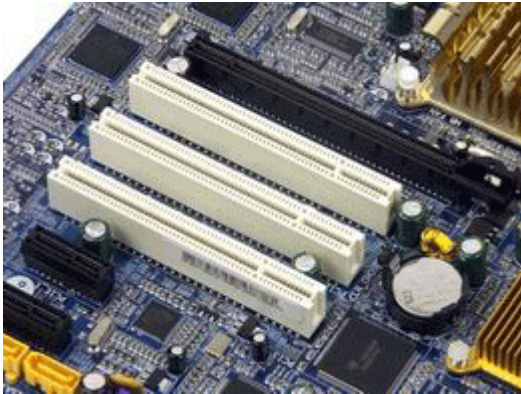



- Fourth Solution,
- (1) Take an other Card B, install it in this PC, Kindly noted that you do not set any admin password..
  - (2) Do not uninstall Card B, plug out the card B then power off.  
Insert Card A which you forgot password, power on to uninstall Card A.
  - (3) Power Off, plug out card A, insert Card B, the above screen will appear, do as the first and second methods.
  - (4) Power off. Now Card A and B become original statue from manufactory.

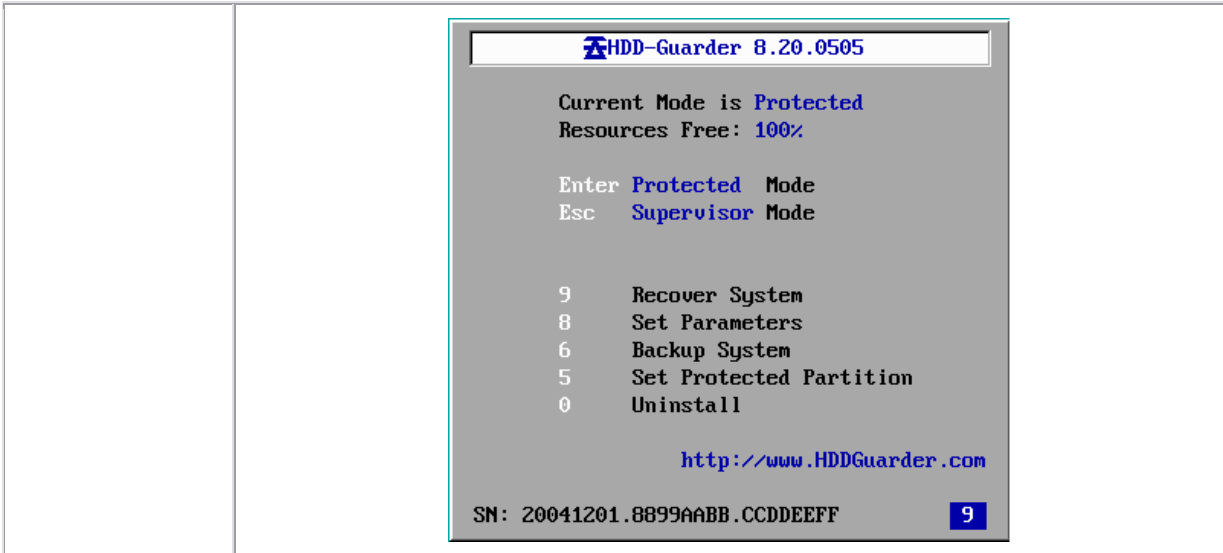




- 1、 If this screen appear, it means the card are compatible with your PC.
- 2、 Kindly DO NOT plug out the card without uninstall it

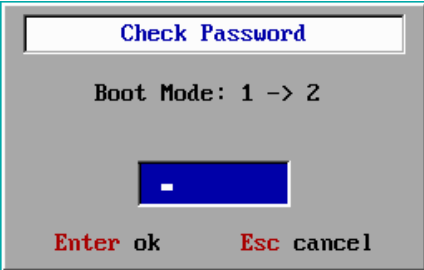
Without installation menu




<p>First Solution,</p>	<p>At first, kindly check if the card is well inserted into PCI slot it should be well touch with Slot, meanwhile, try the following so to be sure the touch are closed enough:</p> <ol style="list-style-type: none"> <li>(1) Clean the dust in the Slot.</li> <li>(2) Change other PCI slot to try.</li> <li>(3) Try to plug in and out some times.</li> <li>(4) Clean the golden part on PCB, you could clean with 95% chroma alcohol or soft rubber.</li> <li>(5) Change another pc of card.</li> <li>(6) All operation should be anti static.</li> </ol> 
<p>Second Solution,</p>	<p>Check if there are card installed already. When Booting, continual pressing  , but do not keep touch  , it is better to press two times for every one second.  If then there are Hotkey menu appears, kindly refer to next Questions.</p>



Third Solution, Change Boot mode. When Booting, continual pressing , but do not keep touch , it is better to press two times for every one second. If PC work, the following menu will appear:



after inputing the default password function then press , the boot mode will be change as 2. then PC will reboot Automatically.If after change Boot mode as 2, while still without installation menu appears, kindly change back the boot mode as default 1.

Fourth Solution, Reset CMOS 。 Kindly reset CMOS as the following items, then repeat the above three methods to check if there are installation menu appears:

( 1 ) Update the sequence of booting, set Network booting as first one:

Case one : A MMX 233 PC , its CMOS setting option:




图 1

Case two : A PII 800 PC:

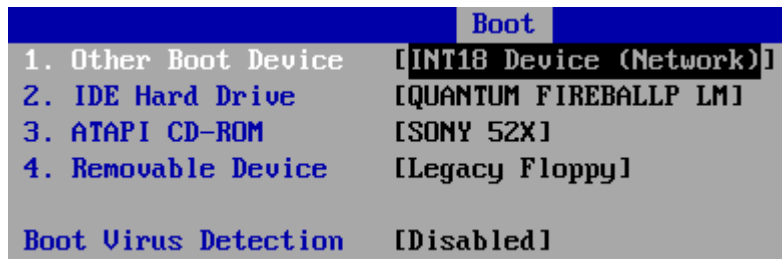


图 2

Case Three : Intel 815:

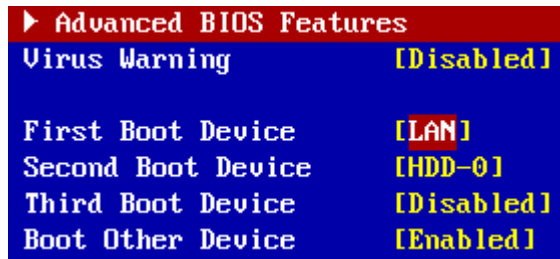


图 3

Case Four : ASUS P4P800:

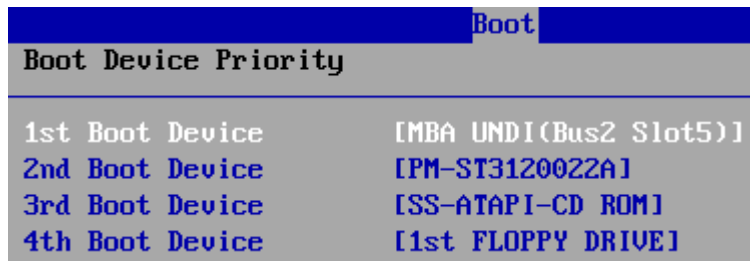


图 4

(2) Set `Interrupt 19 Capture` or similar option as `Enabled` as the following:

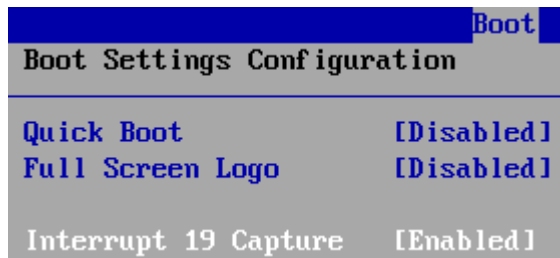


图 5

(3) Set `Plug & Play O/S` or similar option as `Yes` or `Installed` as the following:

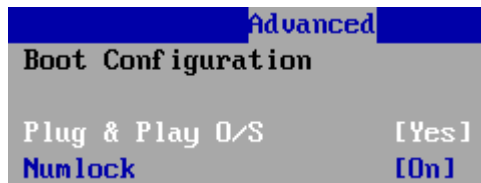
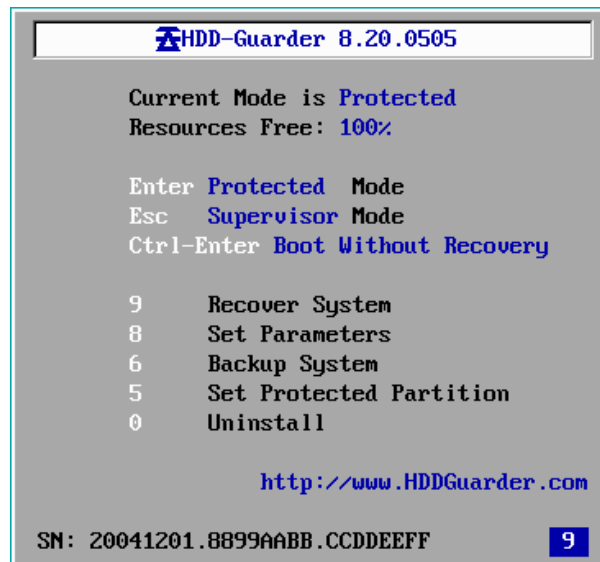




图 6

(4) Close Fast boot , as the following: `Intel(R) Rapid BIOS Boot` and `Quick Boot`

	<p>图 7</p> <p>(5) Close Virus Warning .such as Virus Warnig or Boot Virus Detection.</p> <p>(6) Open PCI slot. For some motherboard, its CMOS default setting is to close the PCI slot.</p> <p>Case 1 :</p> <p>case 2 :</p>
Closing	<p>If you have made all the above operations, while there are still no installation menu appears, it means the card is not compatible with your PC. Kindly contact with your supplier.</p>

**Without Hotkey menu**

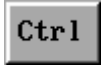




- 1、 When Rebootng, Keep press  , it is better press 2times in every one second till the Hotkey Menu appear, as the above menu.
- 2、 If still without Hotkey menu appear, while PC entering OS, kindly stop pressing  , you should rebooting PC after completely entering into OS, then repeat the 1 step.
- 3、 If after trying the above two steps, while failed, kindly refer to the CMOS setting in lastquestion (without installation menu).

## Special case

In some PC, the CMOS setting- i ntel(R) Rapid BIOS Boot i or i Quick Boot i ± or similar should be set as disable(refer to the following menu).

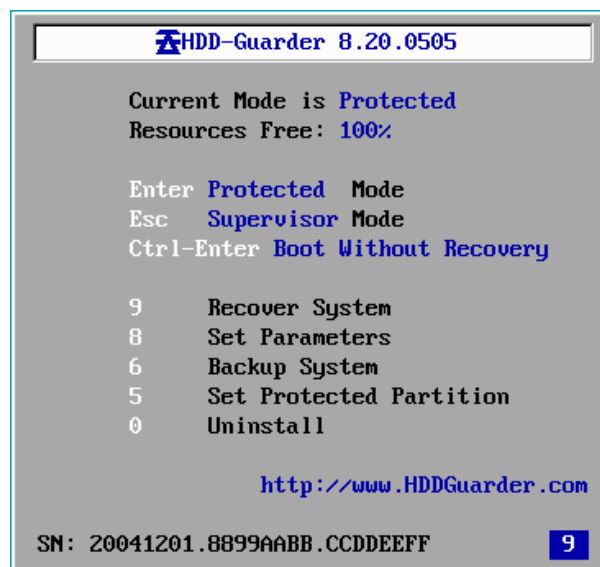
Otherwise, the card will work in first time after installation and not work in all following booting., what

ever power off from OS or press  +  +  to reboot.





Boot	
<b>Boot Settings Configuration</b>	
Quick Boot	[Disabled]
Full Screen Logo	[Disabled]
Interrupt 19 Capture	[Enabled]

## Show Hotkey menu after insert the card without installation



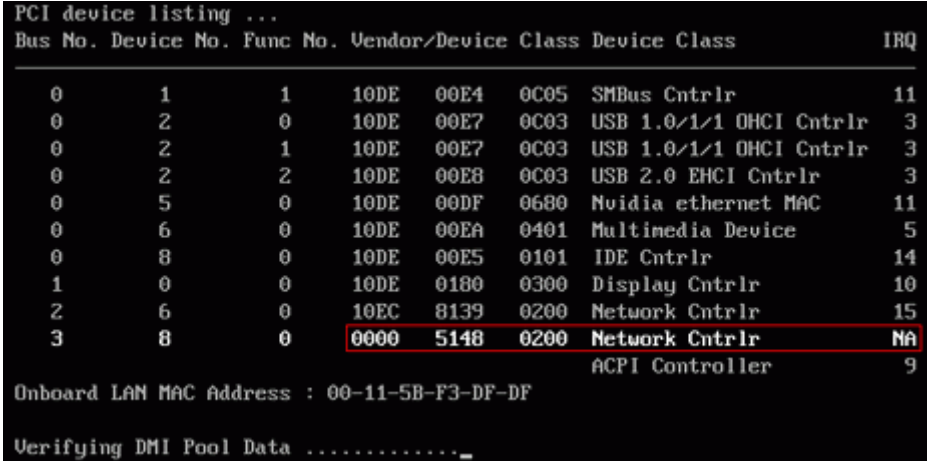
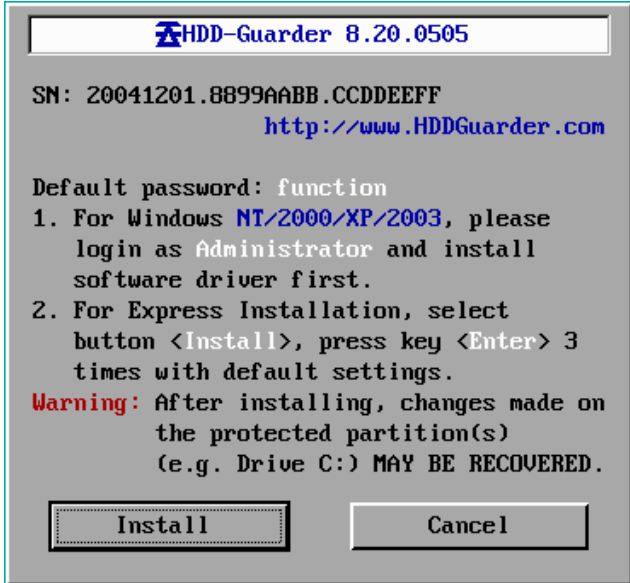
## This is very dangerous case

This PC should have been installed with a recovery card before, while plugged out directly without uninstalling, and that, it is most possible to be redone Hard Disk before. If you did not deal with it, it will result in data or system crash.


- 1、 Press  or  so to stop hotkey menu.
- 2、 Power off, then plug out the card.
- 3、 Power on, enter into OS, install the Hddguarder card driver.
- 4、 Reboot, enter into OS completely.
- 5、 Power off, insert the Hddguarder card back.

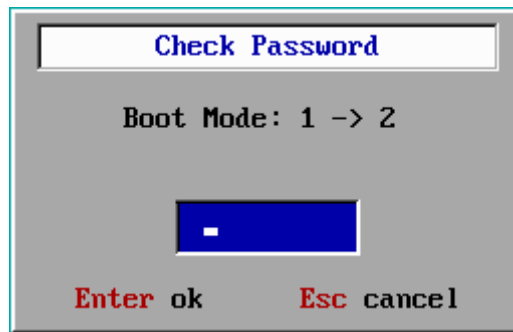
## PC bop - booting or hung


Here the symptom of loop booting or Hung mean the following cases:

Symptom I、	After inserting the card into slot, Booting PC, show 1..... or 2.....the cursor glint and PC hung.
Symptom II、	<p>After inserting the card into slot, booting PC, some PC show the hardware list and some not, then the cursor glint and PC hung. (refer to the following menu)</p>  <pre> PCI device listing ... Bus No. Device No. Func No. Vendor/Device Class Device Class IRQ ----- 0 1 1 10DE 00E4 0C05 SMBus Cntrlr 11 0 2 0 10DE 00E7 0C03 USB 1.0/1/1 OHCI Cntrlr 3 0 2 1 10DE 00E7 0C03 USB 1.0/1/1 OHCI Cntrlr 3 0 2 2 10DE 00E8 0C03 USB 2.0 EHCI Cntrlr 3 0 5 0 10DE 00DF 0680 Nvidia ethernet MAC 11 0 6 0 10DE 00EA 0401 Multimedia Device 5 0 8 0 10DE 00E5 0101 IDE Cntrlr 14 1 0 0 10DE 0180 0300 Display Cntrlr 10 2 6 0 10EC 8139 0200 Network Cntrlr 15 3 8 0 0000 5148 0200 Network Cntrlr NA ACPI Controller 9 Onboard LAN MAC Address : 00-11-5B-F3-DF-DF Verifying DMI Pool Data ..... </pre>
Symptom III、	<p>After insert the card, booting PC, Install menu appear(refer to the following menu), what ever you press Cancel or Install, the PC hung.</p> 

## The solution for Symptom I and II :

To Change the Boot mode of the card. When PC booting, you should keep pressing  , it is better to press two time in every one second, DO NOT pressing it while not away. If it works, the following menu will appear:



The default setting is **Boot Mode 1**, if you want to change from Boot 2 back to Boot 1, the menu will be as **Boot Mode: 2 -> 1**. then press  to change the Boot mode. While If after changing the Boot Mode, while still fail to solve the problem, kindly set back the default **Boot mode 1**.

### The Solution for Symptom III

(Noted: If the card has been installed, Kindly uninstall the card before changing the Boot mode.)  
After uninstall the card, same solution as the above for Symptom I and II.

### Windows Blue screen or boped booting

After install the card, the following screen appears, then PC hung with blue screen



1、	<p>Check if you have well installed the driver of Hddguarder card.</p> <p>If without driver installed, kindly reboot PC, enter into open mode, then Boot into Windows, install driver then reboot PC, and enter into as protected mode.</p>
2、	<p>Check the free size of the protected partitions.</p> <p>The summation of free size of All protected partitions maybe I result in PC hung with blue screen, if the free size is not large enough for Windows. The Solutions are as following:</p> <p>(1) Protect whole Hard disk.</p> <p>(2) If there are one partition is not protected, kindly move the windows virtual memory and temp files into this unprotected partition.</p> <p>Noted: our ezmove provide this function.</p> <p>(3) Enter into open mode, make the DEGRAGMENT for the protected partitions, then back to protection mode.</p>
3、	<p>Check if there were other similar recovery card installed in this PC.</p> <p>From Dec 2005 till now, we found some reports: Some other brand recovery card have conflict with kernel of windows, after installing these cards, our card will not work well.</p>

## Special Case

On Oct., 4, 2005, We found a Special case with the problem of loop booting as following:

- 1、 When PC show the following screen, it maybe reboot.




- 2、 After the above screen, Windows show blue screen, then reboot automatically.
- 3、 When Windows show the following screen, it reboot automatically.



- 4、 Nobody works on this PC while it keep looped reboot.

Our finally conclusion for this case: One kind of Educational software in China result in the Windows system damaged and conflict with card sources, which bring the looped reboot symptom.

## The card NOT work

1、	<p>Check if the driver is well installed.</p> <p>The driver should be installed as Admin mode; If without driver installed, kindly reboot PC, enter into open mode, then Boot into Windows, install driver then reboot PC, and enter into as protected mode.</p>
2、	<p>Check if the card is in protected mode. When PC booting, keep press , two times in every one second, till the hotkey menu appear, as the following menu.</p> <p>Check if it shows Current mode is protected, if it show the mode is supervisor mode, kindly press</p>

Enter ↵

so to enter protected mode.

```
HDD-Guarder 8.20.0505

Current Mode is Protected
Resources Free: 100%

Enter Protected Mode
Esc Supervisor Mode
Ctrl-Enter Boot Without Recovery

9 Recover System
8 Set Parameters
6 Backup System
5 Set Protected Partition
0 Uninstall

http://www.HDDGuarder.com




SN: 20041201.8899AABB.CCDDEEFF 9
```

3、 Check if there were other similar recovery card installed in this PC.

From Dec 2005 till now, we found some reports: Some other brand recovery card have conflict with kernel of windows, after installing these cards, our card will not work well.

## Special Case

In Some PCs, the CMOS setting `Intel(R) Rapid BIOS Boot` and `Quick Boot` or similar items should be set as disable, like the following two menus, otherwise only in the first booting, the card works,

then after following reboot by Windows reboot option or press  +  +  to reboot, the card will not work well.

```
Boot

Silent Boot [Disabled]
Intel(R) Rapid BIOS Boot [Disabled]
Scan User Flash Area [Enabled]
PXE Boot to LAN [Enabled]
USB Boot [Disabled]
```

```
Boot

Boot Settings Configuration

Quick Boot [Disabled]
Full Screen Logo [Disabled]

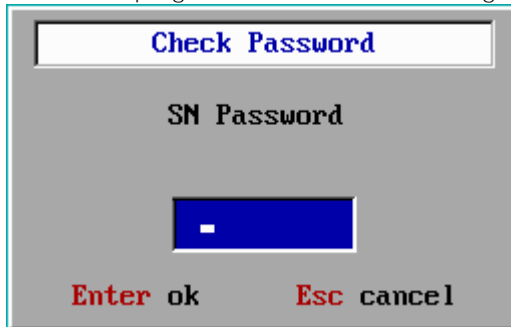
Interrupt 19 Capture [Enabled]
```

## Forgot the Admin password

First Step、 Power off, plug out the card

Second step、 Power on, enter into Windows.

Third step、 Power off, plug in the card, the following menu will appear:

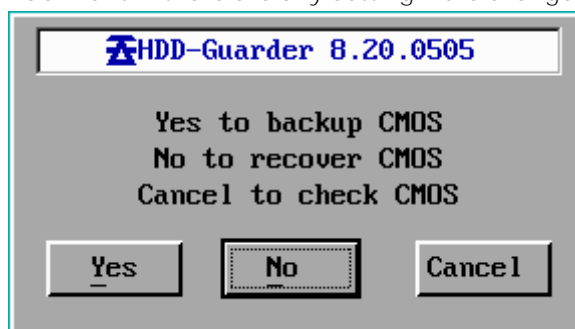


Fourth step、 Kindly refer to the content < [Ask to input SN password](#)>, deal it with according the mentioned solutions.

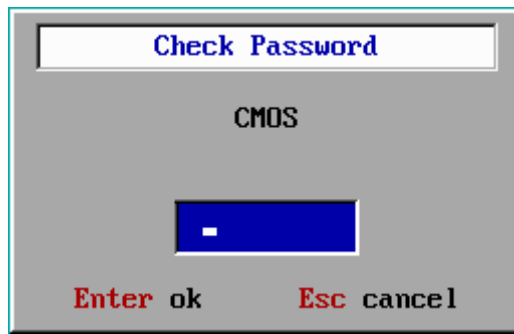
Fifth step、 The card is back the default setting. Kindly reinstall the card. You do not need install driver now.

## Show CMOS menu

If you choose the option of protect CMOS, the card will Auto backup the CMOS current setting; when PC booting, it will show CMOS menu if there are any setting were changed, as the following menu:



Note: if you are not Admin, you could only choose NO so not backup the change, because for Yes and Cancel option, it need the admin password, as the following menu:



## CMOS menu always appear after every booting

First Solution : Select **Cancel – Check CMOS**, PC will Auto reboot three times. During the three times rebooting, you could make the update for CMOS setting, and all these update will be regarded as reasonable update, and in future, if there are any other update for these items, CMOS menu will not show any more.

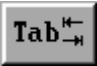
Second Solution : If the first solution could not stop the menu disappear, kindly not choose Protect CMOS.

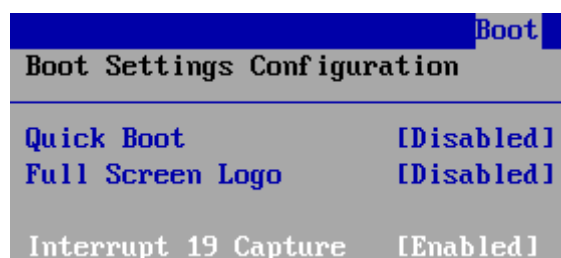
Noted: For some PCs, the CMOS menu will appear 2-3 times even you have choose Cancel

So you have to choose Cancel 2-3 times till the CMOS menu disappear after booting.

## 1.....

When PC booting, after CMOS setting and before hardware list, there are 1..... or 2..... appear.

In some PC, you maybe not find it, kindly check the Quick Boot, Full Screen Logo, Silent Boot, intel(R) Rapid BIOS Boot etc similar CMOS setting, ( see the following menu), or press  when the logo of the PC manufacture appear.



	Boot
Silent Boot	[Disabled]
Intel(R) Rapid BIOS Boot	[Disabled]
Scan User Flash Area	[Enabled]
PXE Boot to LAN	[Enabled]
USB Boot	[Disabled]

After **F1**.....**F2**.....**F4** appear, BIOS will show PC hardware list:

```

PCI device listing ...
Bus No. Device No. Func No. Vendor/Device Class Device Class      IRQ
-----
0      1      1      10DE 00E4 0C05 SMBus Cntrlr      11
0      2      0      10DE 00E7 0C03 USB 1.0/1/1 OHCI Cntrlr  3
0      2      1      10DE 00E7 0C03 USB 1.0/1/1 OHCI Cntrlr  3
0      2      2      10DE 00E8 0C03 USB 2.0 EHCI Cntrlr    3
0      5      0      10DE 00DF 0680 Nvidia ethernet MAC    11
0      6      0      10DE 00EA 0401 Multimedia Device     5
0      8      0      10DE 00E5 0101 IDE Cntrlr          14
1      0      0      10DE 0180 0300 Display Cntrlr        10
2      6      0      10EC 8139 0200 Network Cntrlr        15
3      8      0      0000 5148 0200 Network Cntrlr        NA
                                           ACPI Controller        9

Onboard LAN MAC Address : 00-11-5B-F3-DF-DF
Verifying DMI Pool Data .....

```

the item of **0000 / 5148 / 0200 / Network Cntrlr / NA** is our Hddguarder card.

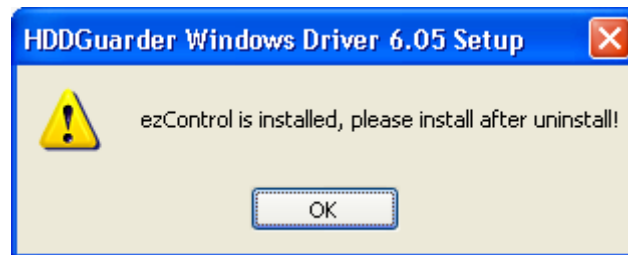
## How to upgrade driver of the card

Kindly often visit our website [www.hddguarder.com](http://www.hddguarder.com) from <http://www.hddguarder.com/newhdd/Download.asp> download the latest driver of the card.

## How to check if the driver is installed or not

From Windows **Control Panel—add and delete software** you could check if driver is installed or not. It show as **Hddguarder Windows Driver 6.06**

**Noted:** if ezControl had been installed, the following menu will appear:



You should uninstall ezControl then install the driver

For latest version ezcontrol and driver V605, in one PC, you could only install one , ezControl or driver.